



DATALOGGER and SOFTWARE for: DIAPHRAGM WALLS

Diaphragms must be carried out with all devices in order to obtain a proper work which follows project demand. Realized diaphragm verticality and rotation must be carried out carefully in order to grant impermeability to joints.



JET DSP 100 / D datalogger can display, on a wide monitor, and record, on an internal memory, the following parameters:

- **Depth** (m, with 1 cm resolution)
- **Inclination** on both X and Y axis to the vertical (with 0,1° resolution)
- **Grab rotation**, Z axis (with 1° resolution)
- X and Y axis deviation to the vertical (with 1cm resolution)

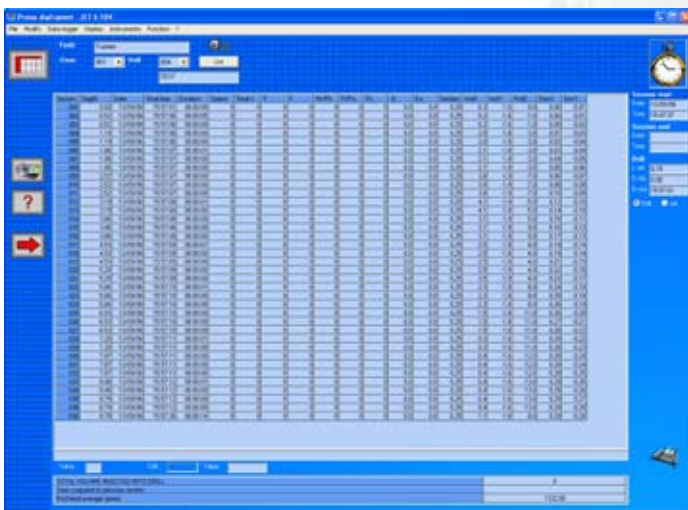
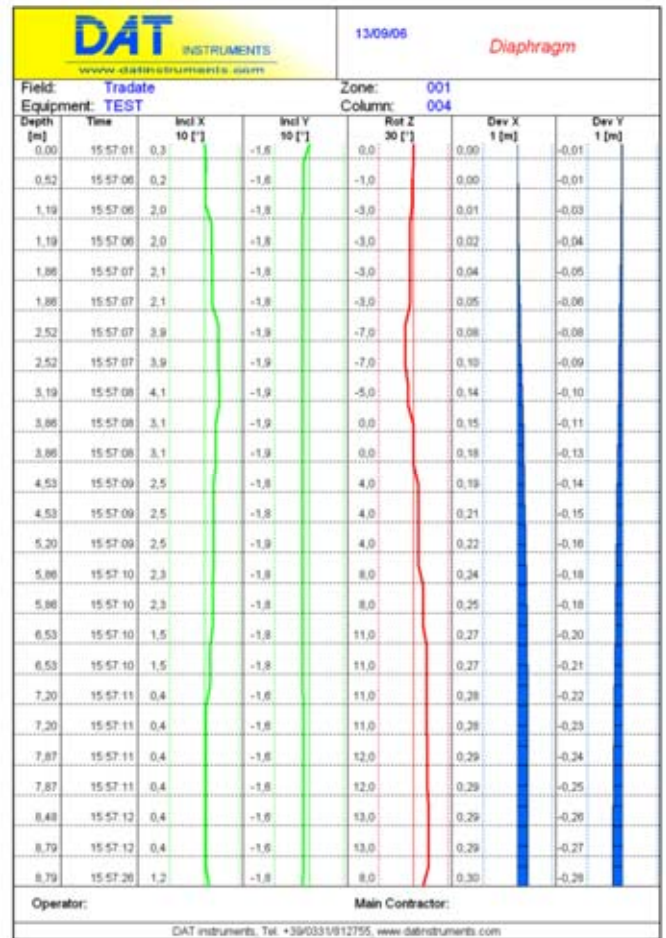
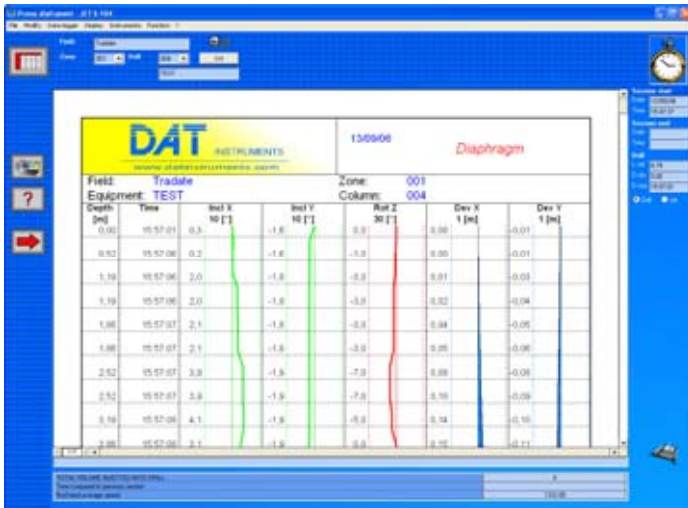
Data are acquired via sensors installed on digging equipment. Inclination sensor can be connected to the datalogger via a cable or via radio.

JET DSP 100 / D can record digging data in function of depth. During strokes necessary to create the diaphragm, each stroke data are recorded. Latest stroke data are also recorded to analyze the dig on the PC once in office.

The datalogger can be set up via a PC. In this way, it is possible to calibrate sensors, set up data acquisition parameters and indicate fullscale graphic values.

JET S 104 - data processing software Data transfer systems to PC

JET DSP 100 / D internal memory is very wide and it let record data for a huge number of digs. Recorded data can be transferred via JET C USB cable. JET S 104 software let you organize and elaborate data, draw graphics and tables and print them. It is also available a function to export data to Microsoft Excel.



Configurazione JET DSP 100 / D, v 1.0

Configurazione ?

Informazioni Acquisizione **Trasduttori** Grafici

Inclinometro

Non considerare angoli inferiori a:

Tentativi di trasmissione:

Inverti assi: Z X Y X con Y

Abilita lettura asse Z No decimali asse Z

Valori zero: Z X Y

Ricevi dati in differita, campionamento (Hz):

Azzerà automaticamente rotazione se premi REC

Encoder

Costante di taratura encoder:

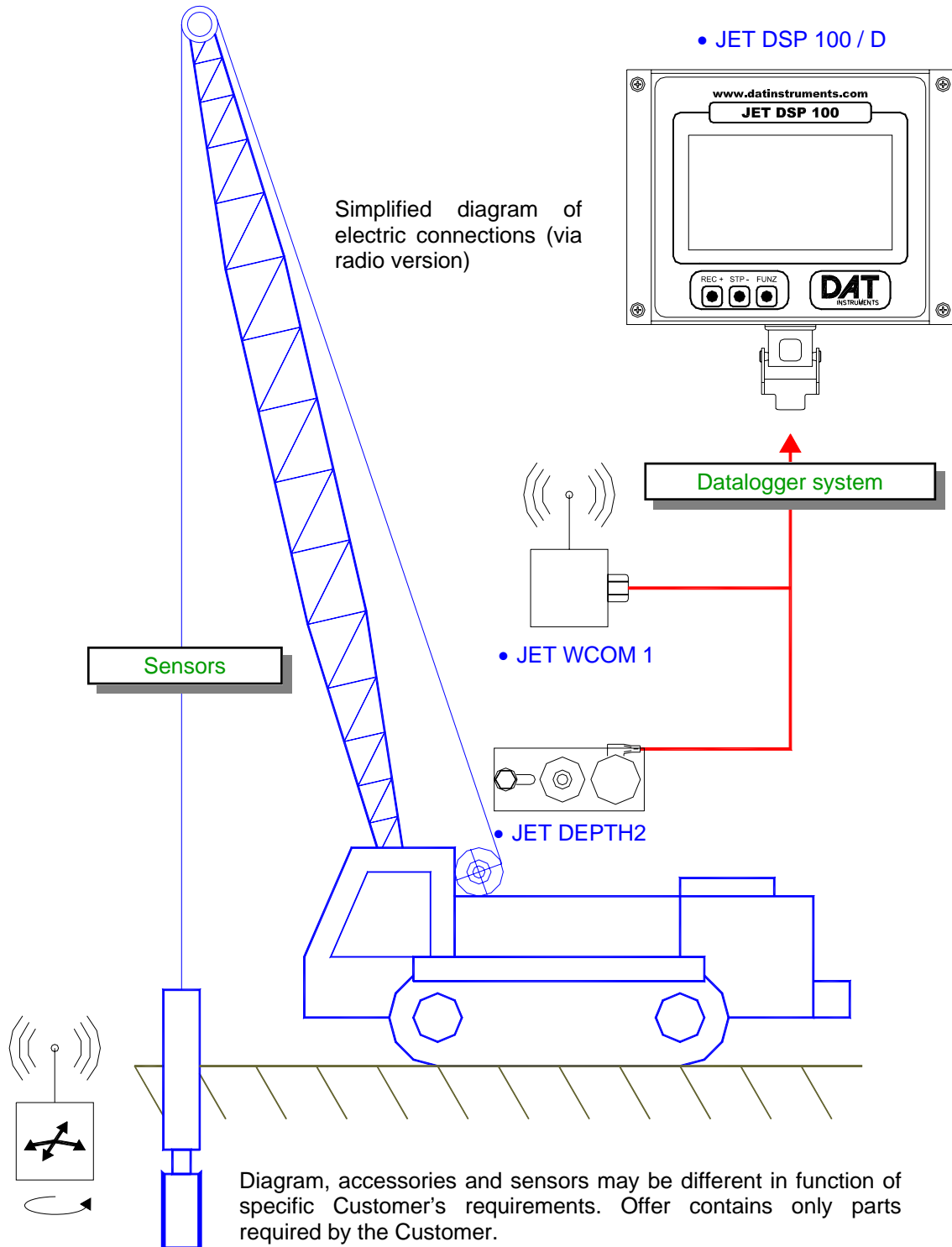
Verso di rotazione inverso

Ricordarsi di svuotare la memoria del JET DSP 100 dopo ogni aggiornamento della configurazione. Premere F1 per l'help.

Together with the equipment, the configuration software is delivered and it is useful to set up datalogger operative parameters and to customize data recording.

JET DSP 100 / D, simplified diagram

DIAPHRAGM WALLS



JET DSP 100 / D - technical specifications

General information :

3 keys simplified keyboard	present
LCD monitor, LED back-lighted	present
Electrical plant connectors	rapid
Instrument global handling	dual uC
Operating environment temperature	-10 +60 °C

Mechanical characteristics :

Case	stainless steel
Case dimensions (mm)	180 x 140
Dimensions with connectors (mm)	210 x 165
Depth (mm)	115

Power supply (to specify in case of order) :

Electricity network power supply	230 Vac
Battery power supply	12 Vdc
Battery power supply	24 Vdc
Maximum power consumption	10 W
Power supply filter	present

Recording capacity :

Advanced functions memory saving	YES
All data recording duration @ 25 cm	1100 meters
All data recording duration @ 50 cm	2200 meters
Kind of memory	Internal flash

Data measuring and conversion :

Depth sensor connection	AB cable
Incl / rot sensor connection (I+R)	digital
Wireless connection possibility	I+R sensor
Input noise filter	present

Communication ports :

PC communication port (to specify in case of order)	RS232 USB
Printer communication port	RS232

Enclosed documentation :

User and maintenance manual	present
Utilization concise compendium	present
CE conformity declaration	present
Testing and calibration certificate	on demand

PC software :

Operating system	Windows
Hardware minimum requirements	Pentium 400
Complete software, advanced commands	present
Data save and organization	present
Data elaboration and customization	present
Reports, tables and graphics creation	present
Data print on system printer	present
Excel data exportation	present
Text files data exportation	present
Downloaded data double check	present
Internet software updates	present



Inclination and rotation sensor, if wireless **JET INCL XY / WMZ** version, is supplied by an internal battery and send data directly to datalogger without needing electrical connections. It has got an hermetic box in order to be immersed during digging operations.